

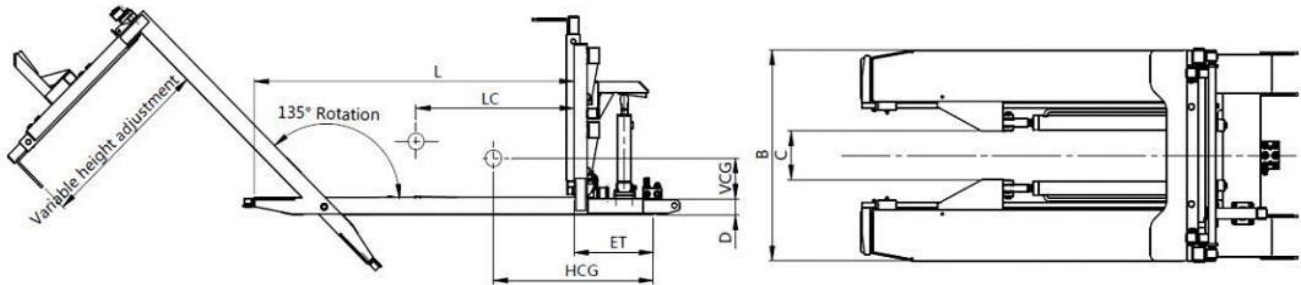


Bin Tipper



Designed to provide efficient and economical means of handling and dumping bins for fresh products industry. It can easily accommodate various bin heights by manually adjusting the top bin stops. The quick fork mounted design allows quick and easy installation, perfectly for season use.

Product Specifications



| Model Number | Capacity @ Load Center (kg@mm) | Mtg.Type ISO | Length of Suit. forks (mm) | Overall Width /B (mm) | Inner Spacer /C (mm) | Thickness of fork tines /D (mm) | ET (mm) | VCG (mm) | HCG (mm) | Weight (kg) |
|--------------|-----------------------------------|-----------------|-------------------------------|--------------------------|-------------------------|------------------------------------|------------|-------------|-------------|----------------|
| QF10B01A | 1000@600 | Slip-on | 1070 | 780 | 180 | 64 | 300 | 88 | 605 | 190 |

- Obtain the actual capacity of the forklift and attachments from the forklift manufacturer.
- Additional one set of oil circuit required on forklift.
- Max size of suit.forks: 125x45x1100 mm.
- Size of suit.bin: 1100-1200 mm
- Above types are the standard types. Please contact the sales person for any special request.



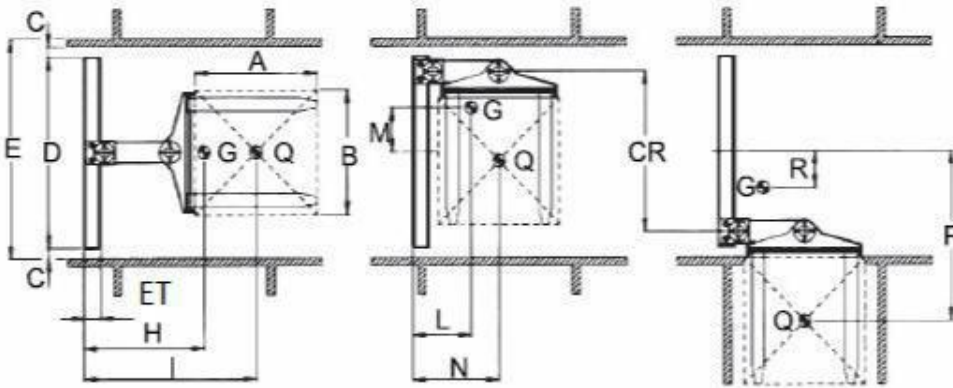


Tri-lateral Head Unit



It's a unique attachment that can put the forks position on front, left or right side while loading. It's used between the forks and fork carriage, pivoting 180 degree and compound traverse via 2 units of hydraulic circuit. It can reach the goods from the side without

Product Specifications



| wuhao | Capacity @ Load Center (kg@mm) | Pallet Size A/B | Stroke CR (mm) | Working Space /C (min) (mm) | Width /D (mm) | HCG /H (mm) | Horizontal Center of Side L/M (mm) | Horizontal Center of Side /I (mm) | C.og gravity of side load inside /N (mm) | ET (mm) | C. of side load outside /P (mm) | Weight (kg) |
|---------|-----------------------------------|-----------------|-------------------|--------------------------------|------------------|----------------|---------------------------------------|--------------------------------------|---|------------|------------------------------------|----------------|
| SX08G01 | 800@830 | 1000/1000 | 1080 | 100 | 1300 | 475 | 350/ 185 | 1569 | 830 | 148 | 1220 | 425 |
| SX08G02 | 800@830 | 1200/1000 | 1280 | 100 | 1530 | 485 | 340/ 210 | 1669 | 830 | 148 | 1420 | 445 |
| SX12G01 | 1200@830 | 1000/1000 | 1030 | 100 | 1400 | 475 | 350/ 185 | 1569 | 830 | 148 | 1250 | 445 |
| SX12G02 | 1200@830 | 1200/1000 | 1230 | 100 | 1600 | 485 | 340/ 210 | 1669 | 830 | 148 | 1450 | 465 |

- Obtain the actual capacity of the forklift and attachments from the forklift manufacturer.
- Above types are the standard types. Please contact the sales person for any special request.





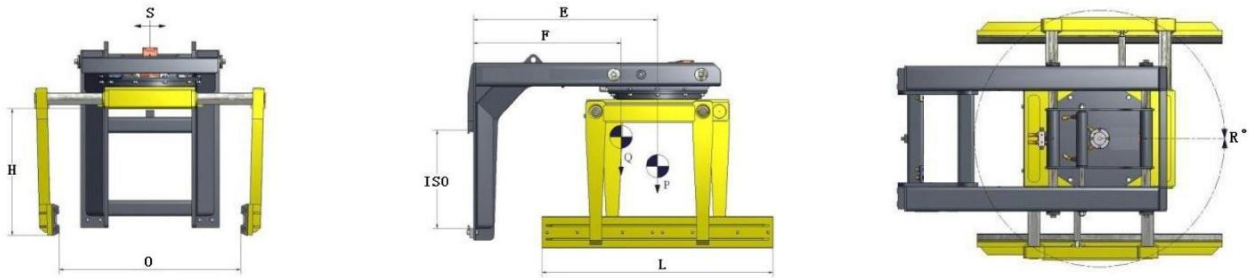
Overhead Block Handler



Widely used in all kinds of brick cubes and rock cubes stacking and non-pallet handling.

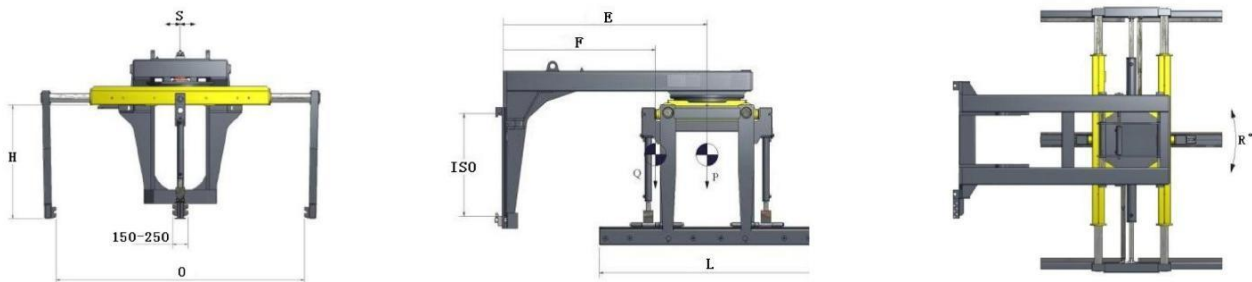
Product Specifications

G Series



| Model Number | Capacity @ Load Center (kg@mm) | Mtg. Class ISO | Opening Range /O (mm) | Arm Length /L (mm) | Arm Height /H (mm) | Side Shifting (mm) | Rotation Angle /R (°) | HCG (mm) | Weight (kg) |
|--------------|--------------------------------|----------------|-----------------------|--------------------|--------------------|--------------------|-----------------------|----------|-------------|
| JK15G01D | 1500@1220 | III | 600-1200 | 1100 | 1100 | ±100 | 360 | 860 | 905 |
| JK20G01D | 2000@1220 | IV | 600-1200 | 1100 | 1100 | ±100 | 360 | 890 | 975 |
| JK20G02D | 2000@1220 | IV | 500-1100 | 1220 | 750 | ±100 | 360 | 942 | 910 |
| JK25G01D | 2500@1150 | IV | 500-1200 | 1100 | 750 | ±100 | 360 | 990 | 1130 |
| JK25G02D | 2500@1220 | IV | 500-1200 | 1530 | 800 | ±100 | 360 | 978 | 1285 |
| JK30G01D | 3000@1220 | IV | 500-1100 | 1530 | 950 | ±100 | 360 | 1160 | 1550 |
| JK40G01D | 4000@1100 | IV | 500-1100 | 1900 | 1160 | ±100 | 360 | 925 | 2055 |

H Series



| Model Number | Capacity @ Load Center (kg@mm) | Mtg. Class ISO | Opening Range /O (mm) | Arm Length /L (mm) | Arm Height /H (mm) | Side Shifting (mm) | Rotation Angle /R (°) | HCG (mm) | Weight (kg) |
|--------------|--------------------------------|----------------|-----------------------|--------------------|--------------------|--------------------|-----------------------|----------|-------------|
| JK15H01D | 1500@2000 | IV | 1500-2200 | 1100 | 800 | ±100 | 360 | 1400 | 1450 |
| JK25H01D | 2500@2000 | IV | 1980-2780 | 1100 | 850 | ±100 | 360 | 1420 | 1790 |
| JK45H02D | 4500@2250 | IV | 1980-2780 | 2200 | 750 | ±100 | 360 | 1780 | 2880 |

- Obtain the actual capacity of the forklift and attachments from the forklift manufacturer.
- Above types are the standard types. Please contact the sales person for any special request.



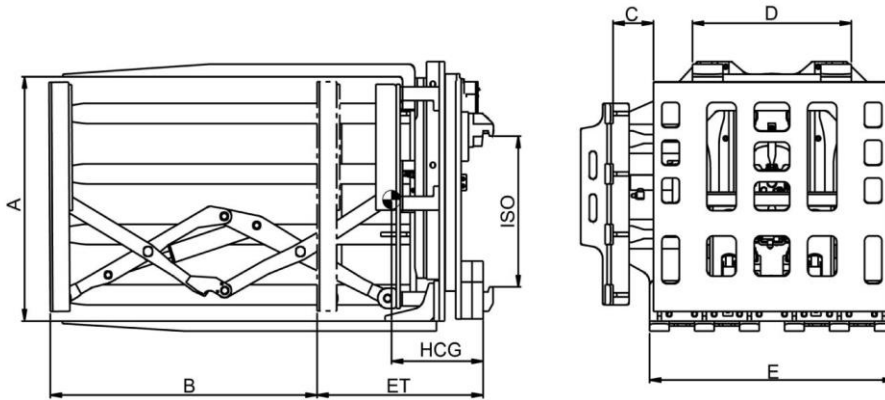


Invert Push Clamp



It can be used in nearly every operation that ships unit loads of bags or cartons, such as fertilizer, grain, cement, sugar, canned goods, boxed goods, glass and plastic products.

Product Specifications



| Model Number | Capacity @ Load Center (kg@mm) | Mtg. Class (ISO) | Opening Range /A (mm) | Push Range /B (mm) | Opening Range /C (mm) | Fork Width /D (mm) | Push Plate Size /E (mm) | Side Shifting (mm) | ET (mm) | HCG (mm) | Weight (kg) |
|--------------------------|--------------------------------|------------------|-----------------------|--------------------|-----------------------|--------------------|-------------------------|--------------------|---------|----------|-------------|
| Standard Type | | | | | | | | | | | |
| XT15G01C | 1500@500 | III | 970-1530 | 1200 | 15-215 | 650 | 965 | / | 460 | 385 | 1300 |
| XT20G01C | 2000@500 | III | 970-1530 | 1200 | 15-215 | 650 | 965 | / | 500 | 400 | 1360 |
| XTN25G01C | 2400@500 | IV | 1100-1630 | 1200 | 15-265 | 660 | 1000 | / | 410 | 425 | 1420 |
| XT25G02D | 2400@500 | IV | 970-1530 | 1200 | 15-215 | 650 | 965 | / | 545 | 425 | 1700 |
| XT30G01D | 3000@500 | IV | 1070-1730 | 1200 | 15-215 | 650 | 965 | / | 590 | 425 | 1950 |
| XT35G01D | 3500@500 | IV | 1070-1730 | 1200 | 15-215 | 650 | 965 | / | 600 | 425 | 2000 |
| Sideshifting Type | | | | | | | | | | | |
| XT15H01C | 1500@500 | III | 970-1530 | 1200 | 15-215 | 650 | 965 | ±100 | 510 | 388 | 1325 |
| XT20H01C | 2000@500 | III | 970-1530 | 1200 | 15-215 | 650 | 965 | ±100 | 520 | 405 | 1385 |
| XT25H01D | 2400@500 | IV | 1070-1630 | 1200 | 15-265 | 650 | 965 | ±100 | 560 | 425 | 1905 |
| XT25H02D | 2400@500 | IV | 970-1530 | 1200 | 15-215 | 650 | 970 | ±100 | 560 | 428 | 1750 |
| XT30H01D | 3000@500 | IV | 1070-1730 | 1200 | 15-215 | 650 | 970 | ±100 | 620 | 428 | 2000 |
| XT35H01D | 3500@500 | IV | 1070-1730 | 1200 | 15-215 | 650 | 970 | ±100 | 620 | 428 | 2050 |

- Obtain the actual capacity of the forklift and attachments from the forklift manufacturer.
- Above types are the standard types. Please contact the sales person for any special request.



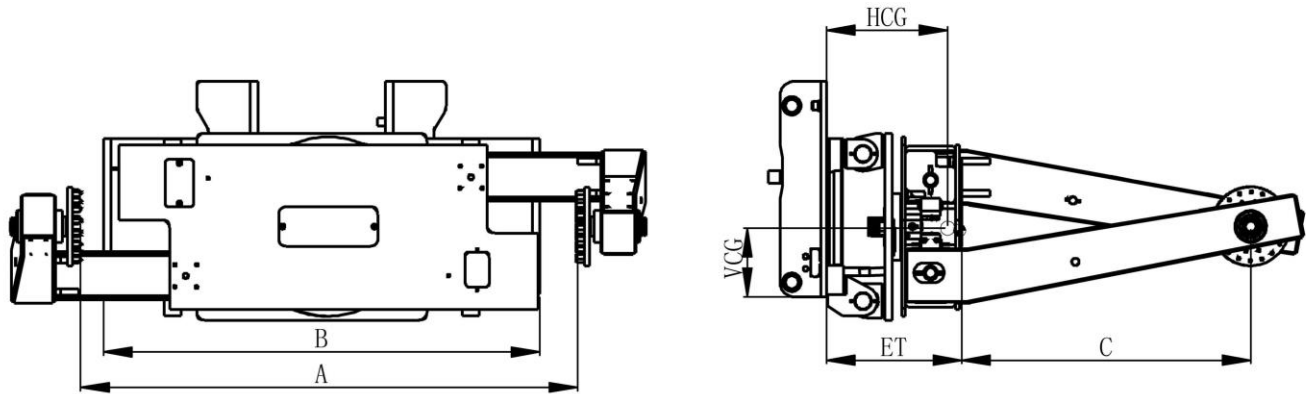


Multi-functional Tyre Handler



It can efficiently stack and transport tyres without pallet. The drive can rotate, tip and sideshift tyres without leaving seat.

Product Specifications



| Model Number | Capacity @ Load Center (kg@mm) | Opening Range /A (mm) | Revolving Angle (mm) | Tilt Angle of arm (mm) | Side Shifting (mm) | Frame Width /B (mm) | Arm Length /C (mm) | ET (mm) | VCG (mm) | HCG (mm) |
|--------------|--------------------------------|-----------------------|----------------------|------------------------|--------------------|---------------------|--------------------|---------|----------|----------|
| JL15G01 | 1500@600 | 1040-2400 | 360° | 90° | ±150 | 1800 | 1200 | 480 | 284 | 398 |
| JL30G01 | 3000@750 | 1040-3000 | 360° | 90° | ±150 | 2642 | 1500 | 480 | 439 | 500 |
| JL50G01 | 4500@850 | 1300-3500 | 360° | 90° | ±150 | 2768 | 1700 | 640 | 558 | 500 |

- Obtain the actual capacity of the forklift and attachments from the forklift manufacturer.
- Above types are the standard types. Please contact the sales person for any special request.



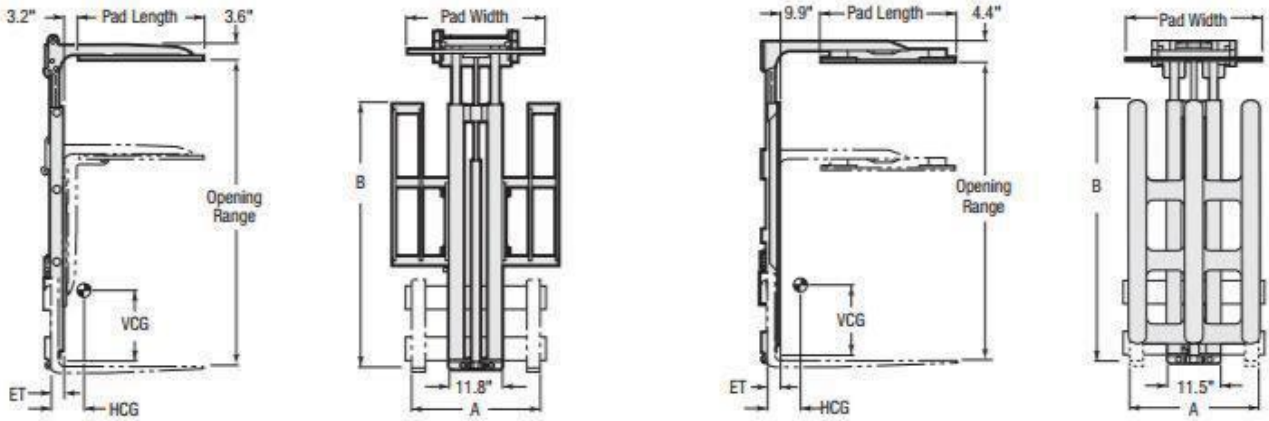


Load Stabilizer



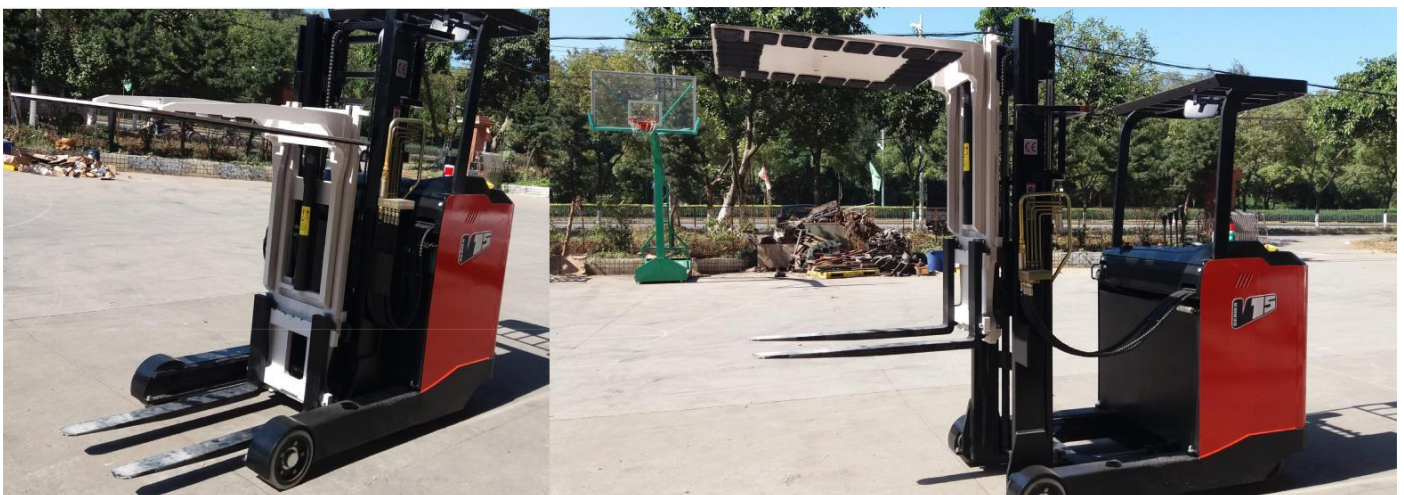
Widely used in bulk load handling of machinery industry, chemistry industry and food industry. It ensures the stability of load handling on braking or cornering.

Product Specifications



| Model Number | Capacity @ Load Center (kg@mm) | Mtg. Class (ISO) | Type | Pad Size (mm) | Opening range (mm) | Backrest Size A*B (mm) | HCG (mm) | VCG (mm) | ET (mm) | Weight (kg) |
|--------------|-----------------------------------|---------------------|----------------|------------------|-----------------------|------------------------------|-------------|-------------|------------|----------------|
| LS35G01S | 1590@600 | II | Sideshifting | 760x760 | 1140-2135 | 940x1475 | 137 | 663 | 125 | 272 |
| LS35G02S | 1590@600 | II | Sideshifting | 760x915 | 1140-2135 | 940x1475 | 155 | 673 | 125 | 279 |
| LS35G03S | 1590@600 | II | Sideshifting | 915x915 | 1140-2135 | 940x1475 | 165 | 686 | 125 | 284 |
| LS35D01T | 1590@600 | II | N-sideshifting | 760x760 | 1140-2135 | 940x1475 | 127 | 828 | 64 | 198 |
| LS35D02T | 1590@600 | II | N-sideshifting | 760x915 | 1140-2135 | 940x1475 | 153 | 838 | 64 | 204 |
| LS35D03T | 1590@600 | II | N-sideshifting | 915x915 | 1140-2135 | 940x1475 | 165 | 846 | 64 | 209 |

- Obtain the actual capacity of the forklift and attachments from the forklift manufacturer.
- Above types are the standard types. Please contact the sales person for any special request.

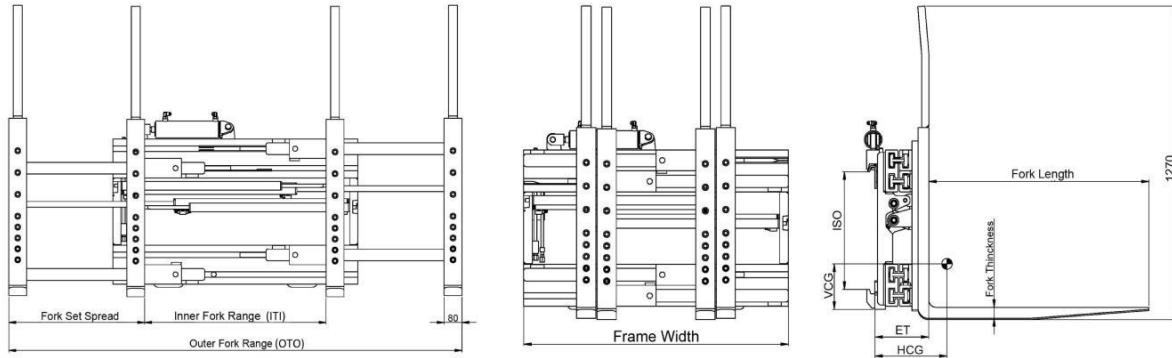


Single Double Pallet Handler



Widely used in food, beverage, canned products and trading industry, especially on good handling and stacking from container.

Product Specifications



| Model Number | Capacity @ Load Center (kg) | Mtg. Class ISO | Min.Truck Carriage Width (mm) | Frame Width (mm) | ITI (mm) | OTO (mm) | Fork Set Spread (mm) | Fork Size (L*W*T) (mm) | ET (mm) | VCG (mm) | HCG (mm) | Weight (kg) |
|--------------|-----------------------------|----------------|-------------------------------|------------------|----------|----------|----------------------|------------------------|---------|----------|----------|-------------|
| | | | | | | | | | | | | |
| ST25G01C | 2500 | III | 914 | 1100 | 330-815 | 660-2035 | 610 | 915x80x45 | 224 | 284 | 191 | 488 |
| ST25G02C | 2500 | III | 980 | 1100 | 330-815 | 660-2035 | 610 | 1070x80x45 | 260 | 275 | 234 | 565 |
| ST28G01C | 2800 | III | 914 | 1100 | 330-815 | 660-2035 | 610 | 915x80x45 | 226 | 295 | 201 | 513 |
| ST28G02C | 2800 | III | 980 | 1100 | 330-815 | 660-2040 | 640 | 1150x80x45 | 226 | 273 | 249 | 536 |
| ST32G01C | 3200 | III | 914 | 1100 | 330-815 | 660-2035 | 610 | 915x80x45 | 234 | 287 | 216 | 549 |
| ST32G02C | 3200 | III | 980 | 1100 | 330-815 | 660-2040 | 640 | 1150x80x45 | 234 | 250 | 267 | 557 |

- Obtain the actual capacity of the forklift and attachments from the forklift manufacturer.
- Above types are the standard types. Please contact the sales person for any special request.





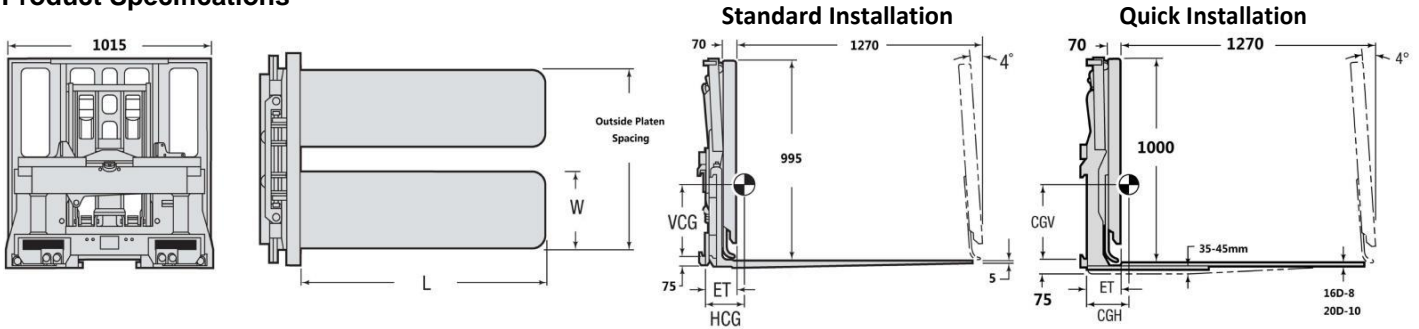
Push Pull



Push/Pull is rugged, heavy-duty attachments for high cycle slipsheet applications requiring high productivity with low maintenance.

Products typically handled with a push/pull include: bagged products, cased products, glass etc.

Product Specifications



| Model Number | Capacity @ Load Center (kg@mm) | Type | Mtg. Class (ISO) | Min.Truck | Platen Size WxL (mm) | Outside Platen Spacing (mm) | ET (mm) | HCG (mm) | VCG (mm) | Weight (kg) |
|------------------------------|-----------------------------------|------------------|---------------------|------------------------|----------------------------|--------------------------------|------------|-------------|-------------|----------------|
| | | | | Carriage Width (mm) | | | | | | |
| Quick Installation | | | | | | | | | | |
| TL16D01B | 1600@600 | non-retaining | II | 760 | 380x1220 | 865 or 1015 | 165 | 226 | 320 | 336 |
| TL16D02B | 1600@600 | non-retaining | II | 790 | 455x1220 | 1015 or 1170 | 165 | 246 | 305 | 347 |
| TL16D03B | 1600@600 | pallet retaining | II | 760 | 380x1220 | 865 or 1015 | 236 | 254 | 295 | 411 |
| TL16D04B | 1600@600 | pallet retaining | II | 790 | 455x1220 | 1015 or 1170 | 236 | 269 | 290 | 424 |
| TL20D01B | 2000@600 | non-retaining | II | 790 | 380x1220 | 865 or 1015 | 165 | 246 | 305 | 347 |
| TL20D02B | 2000@600 | non-retaining | II | 790 | 455x1220 | 1015 or 1170 | 165 | 264 | 295 | 361 |
| TL20D03B | 2000@600 | pallet retaining | II | 790 | 380x1220 | 865 or 1015 | 236 | 272 | 290 | 424 |
| TL20D04B | 2000@600 | pallet retaining | II | 790 | 455x1220 | 1015 or 1170 | 236 | 290 | 275 | 438 |
| Standard Installation | | | | | | | | | | |
| TL16G01B | 1600@600 | non-retaining | II | 915 | 380x1220 | 865 or 1065 | 165 | 203 | 235 | 479 |
| TL16G02B | 1600@600 | non-retaining | II | 915 | 455x1220 | 1015 or 1220 | 165 | 221 | 225 | 501 |
| TL16G03B | 1600@600 | pallet retaining | II | 915 | 380x1220 | 865 or 1065 | 229 | 239 | 225 | 603 |
| TL16G04B | 1600@600 | pallet retaining | II | 915 | 455x1220 | 1015 or 1220 | 229 | 257 | 210 | 633 |
| TL20G01B | 2000@600 | non-retaining | II | 915 | 380x1220 | 865 or 1065 | 165 | 211 | 230 | 490 |
| TL20G02B | 2000@600 | non-retaining | II | 915 | 455x1220 | 1015 or 1220 | 165 | 231 | 215 | 515 |
| TL20G03B | 2000@600 | pallet retaining | II | 915 | 380x1220 | 865 or 1065 | 229 | 239 | 225 | 603 |
| TL20G04B | 2000@600 | pallet retaining | II | 915 | 455x1220 | 1015 or 1220 | 229 | 257 | 210 | 633 |

- Obtain the actual capacity of the forklift and attachments from the forklift manufacturer.
- Above types are the standard types. Please contact the sales person for any special request.



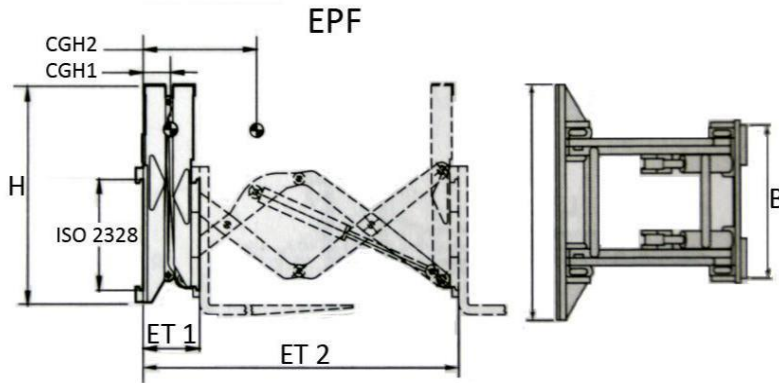


Load Extender



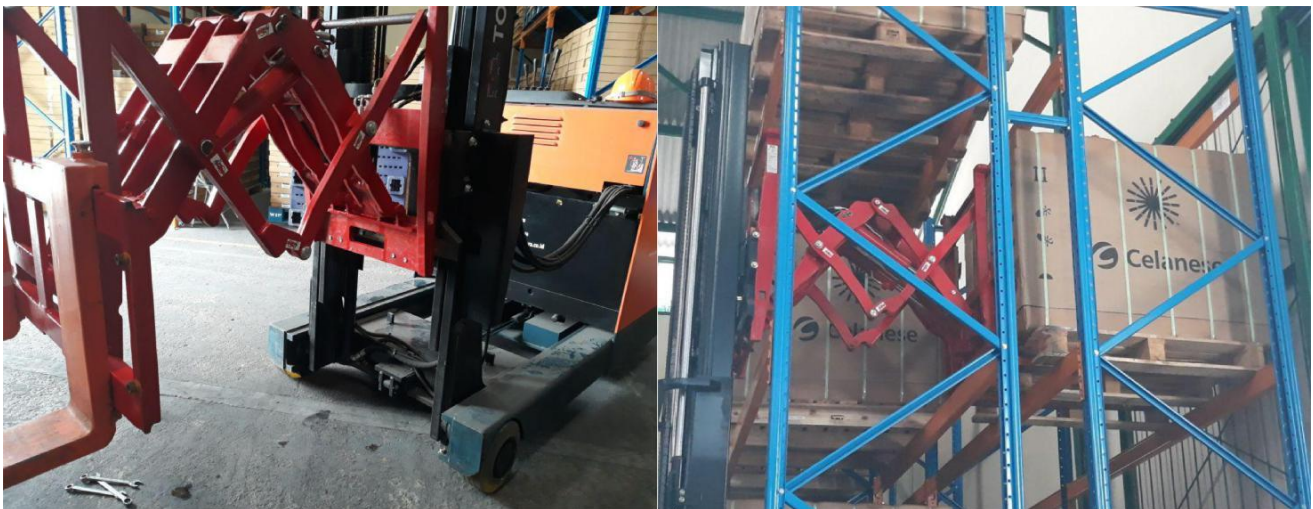
It is a useful application when loading and unloading goods from one side only. Extended reach allows the driver to work from one side which reduces working time and increases productivity.

Product Specifications



| Model Number | Capacity @ Load Center (kg@mm) | Capacity @ | | Hinged Fork Mtg. Class | Overall Height /H (mm) | ET1 (mm) | ET2 (mm) | HCG (mm) | Weight (kg) |
|--------------|--------------------------------------|-------------------------------|-------------------|---------------------------|------------------------------|-------------|-------------|-------------|----------------|
| | | Load Center EXT (kg@mm) | Mtg. Class ISO | | | | | | |
| SC25D01B | 2500@500 | 800@500 | II | II | 990 | 250 | 1150 | 140 | 390 |
| SC35D01C | 3500@500 | 1500@500 | III | III | 1000 | 265 | 1165 | 155 | 510 |

- Obtain the actual capacity of the forklift and attachments from the forklift manufacturer.
- Above types are the standard types. Please contact the sales person for any special request.





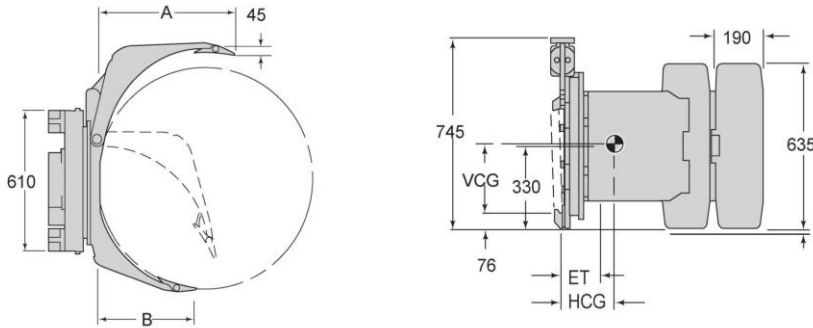
Paper Roll Clamp



G-Series Paper Roll Clamp is designed with optimized clamp arm and thinner pad to avoid damage while knifing in between rolls in containers, trailers and rail cars. Excellent visibility through the arms and frame allow for maximum productivity and minimum roll damage.

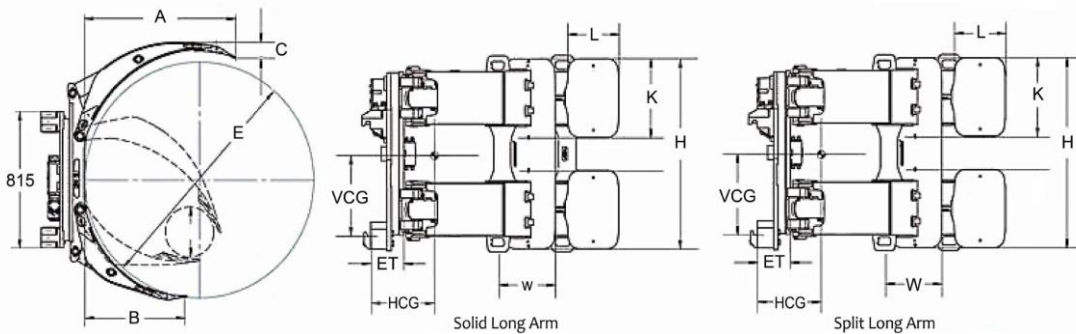
Product Specifications

15G Series



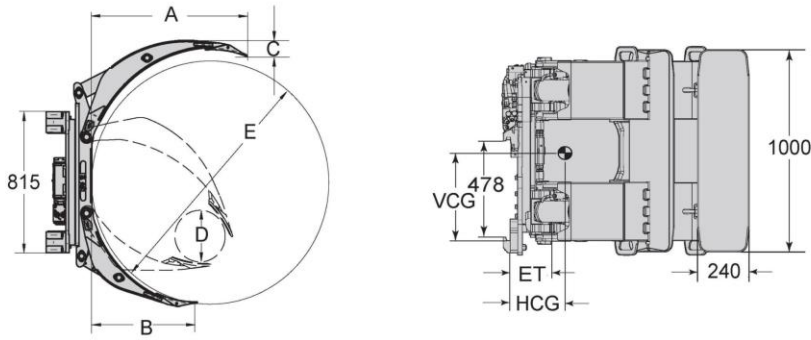
| Model Number | Capacity (kg) | Roll Range D-E (mm) | Mounting Class | Long Arm Length /A (mm) | Short Arm Length /B (mm) | Long Arm Thickness /C (mm) | Short Arm Type | VCG (mm) | ET (mm) | HCG (mm) | Weight (kg) |
|--------------|------------------|------------------------|-------------------|----------------------------------|-----------------------------------|-------------------------------------|-------------------|-------------|------------|-------------|----------------|
| XZ15G01B | 1300 | 330-1150 | II | 685 | 515 | 45 | fixed | 330 | 150 | 216 | 350 |
| XZ15G02B | 1200 | 410-1300 | II | 790 | 580 | 45 | fixed | 330 | 150 | 221 | 360 |
| XZ15G03B | 1200 | 450-1500 | II | 890 | 680 | 45 | fixed | 330 | 150 | 270 | 450 |
| XZ15G04B | 1000 | 560-1600 | II | 940 | 730 | 45 | fixed | 330 | 150 | 290 | 460 |

25G Series



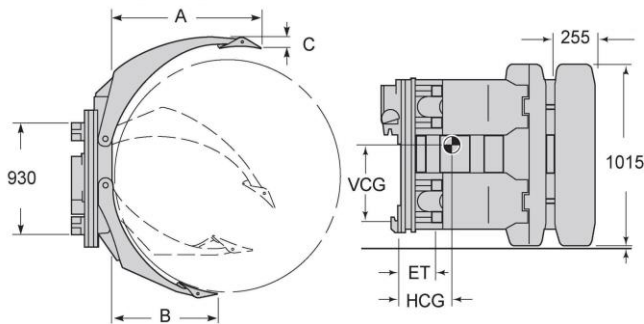
| Model Number | Capacity (kg) | Roll Range D-E (mm) | Mounting Class | Long Arm Length /A (mm) | Short Arm Length /B (mm) | Long Arm Thickness /C (mm) | Short Arm Type | VCG (mm) | ET (mm) | HCG (mm) | Weight (kg) |
|--------------|------------------|------------------------|-------------------|----------------------------------|-----------------------------------|-------------------------------------|-------------------|-------------|------------|-------------|----------------|
| XZ25G01C | 2200 | 200-1400 | III | 953 | 623 | 36 | adjustable | 362 | 228 | 294 | 617 |
| XZ25G02C | 2050 | 200-1525 | III | 1013 | 685 | 36 | adjustable | 362 | 228 | 322 | 638 |
| XZ25G03C | 1950 | 200-1600 | III | 1047 | 723 | 36 | adjustable | 362 | 228 | 328 | 650 |
| XZ25G04C | 2200 | 400-1400 | III | 953 | 623 | 36 | fixed | 361 | 228 | 295 | 613 |
| XZ25G05C | 2050 | 450-1525 | III | 1013 | 685 | 36 | fixed | 362 | 228 | 323 | 634 |
| XZ25G06C | 1950 | 470-1600 | III | 1047 | 723 | 36 | fixed | 362 | 228 | 329 | 646 |
| XZ25G07C | 1700 | 250-1830 | III | 1130 | 930 | 36 | adjustable | 362 | 228 | 445 | 800 |
| XZ25G08C | 1700 | 680-1830 | III | 1130 | 930 | 36 | fixed | 362 | 228 | 445 | 810 |

30G Series



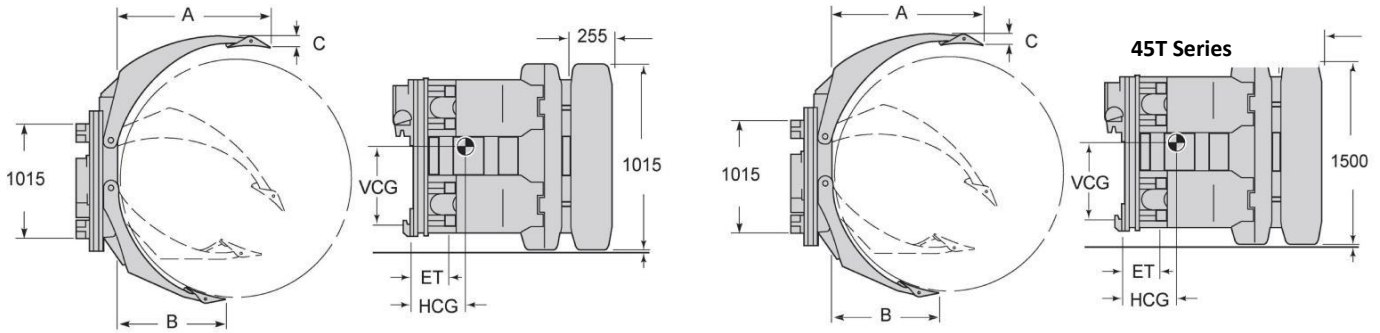
| Model Number | Capacity (kg) | Roll Range D-E (mm) | Mounting Class ISO | Long Arm Length /A (mm) | Short Arm Length /B (mm) | Long Arm Thickness /C (mm) | Short Arm Type (mm) | VCG (mm) | ET (mm) | HCG (mm) | Weight (kg) |
|--------------|------------------|------------------------|--------------------------|----------------------------------|-----------------------------------|-------------------------------------|---------------------------|-------------|------------|-------------|----------------|
| XZ30G01C | 2800 | 200-1400 | III | 953 | 624 | 43 | adjustable | 429 | 195 | 267 | 733 |
| XZ30G02C | 2550 | 200-1525 | III | 1005 | 695 | 43 | adjustable | 429 | 195 | 283 | 761 |
| XZ30G03C | 2450 | 200-1600 | III | 1098 | 739 | 43 | adjustable | 430 | 195 | 285 | 778 |
| XZ30G04C | 2150 | 200-1830 | III | 1230 | 845 | 43 | adjustable | 431 | 195 | 326 | 849 |
| XZ30G05C | 2800 | 450-1400 | III | 953 | 624 | 43 | fixed | 429 | 195 | 268 | 724 |
| XZ30G06C | 2550 | 575-1525 | III | 1005 | 695 | 43 | fixed | 429 | 195 | 286 | 752 |
| XZ30G07C | 2450 | 625-1600 | III | 1098 | 739 | 43 | fixed | 429 | 195 | 287 | 769 |
| XZ30G08C | 2150 | 625-1830 | III | 1230 | 845 | 43 | fixed | 430 | 195 | 329 | 842 |

40G Series --- Fixed Frame



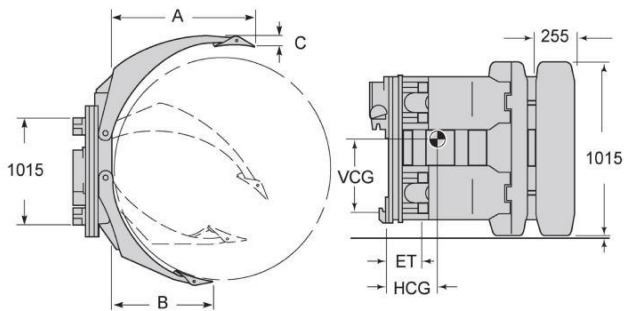
| Model Number | Capacity (kg) | Roll Range D-E (mm) | Mounting Class ISO | Long Arm Length /A (mm) | Short Arm Length /B (mm) | Long Arm Thickness /C (mm) | Short Arm Type (mm) | VCG (mm) | ET (mm) | HCG (mm) | Weight (kg) |
|--------------|------------------|------------------------|--------------------------|----------------------------------|-----------------------------------|-------------------------------------|---------------------------|-------------|------------|-------------|----------------|
| XZ40G01C | 4000 | 250-1300 | III/IV | 875 | 575 | 65 | adjustable | 430 | 270 | 285 | 900 |
| XZ40G02C | 3500 | 250-1520 | III/IV | 1000 | 670 | 65 | adjustable | 430 | 270 | 320 | 980 |
| XZ40G03C | 3000 | 250-1650 | III/IV | 1070 | 730 | 65 | adjustable | 430 | 270 | 340 | 1050 |
| XZ40G04C | 2700 | 350-1830 | III/IV | 1165 | 810 | 65 | adjustable | 430 | 270 | 350 | 1130 |
| XZ40G05C | 4000 | 500-1300 | III/IV | 875 | 575 | 65 | fixed | 430 | 270 | 285 | 900 |
| XZ40G06C | 3500 | 500-1520 | III/IV | 1000 | 670 | 65 | fixed | 430 | 270 | 320 | 980 |
| XZ40G07C | 3000 | 500-1650 | III/IV | 1070 | 730 | 65 | fixed | 430 | 270 | 340 | 1050 |
| XZ40G08C | 2700 | 635-1830 | III/IV | 1165 | 810 | 65 | fixed | 430 | 270 | 350 | 1130 |

45G Series / 45T Series --- Fixed Frame



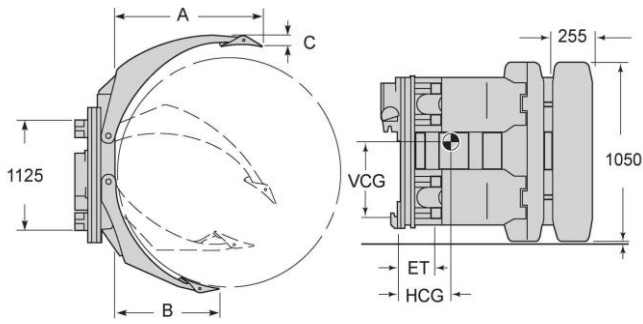
| Model Number | Capacity (kg) | Roll Range D-E (mm) | Mounting Class ISO | Long Arm Length /A (mm) | Short Arm Length /B (mm) | Long Arm Thickness /C (mm) | Short Arm Type (mm) | VCG (mm) | ET (mm) | HCG (mm) | Weight (kg) |
|--------------|------------------|------------------------|--------------------------|----------------------------------|-----------------------------------|-------------------------------------|---------------------------|-------------|------------|-------------|----------------|
| XZ45G01D | 4500 | 250-1300 | IV | 900 | 565 | 85 | adjustable | 560 | 198 | 284 | 1240 |
| XZ45G02D | 4100 | 250-1520 | IV | 965 | 680 | 85 | adjustable | 560 | 198 | 310 | 1290 |
| XZ45G03D | 3400 | 360-1830 | IV | 1105 | 815 | 85 | adjustable | 560 | 198 | 338 | 1380 |
| XZ45G04D | 2700 | 450-2200 | IV | 1330 | 980 | 85 | adjustable | 560 | 198 | 380 | 1400 |
| XZ45G05D | 4500 | 560-1300 | IV | 900 | 565 | 85 | fixed | 560 | 198 | 284 | 1230 |
| XZ45G06D | 4100 | 660-1520 | IV | 965 | 680 | 85 | fixed | 560 | 198 | 310 | 1280 |
| XZ45G07D | 3400 | 660-1830 | IV | 1105 | 815 | 85 | fixed | 560 | 198 | 338 | 1370 |
| XZ45G08D | 2700 | 850-2200 | IV | 1330 | 980 | 85 | fixed | 560 | 198 | 380 | 1390 |
| XZ45G09D | 3500 | 250-1450 | IV | 980 | 690 | 65 | adjustable | 430 | 270 | 285 | 980 |
| XZ45T10D | 2200 | 580-2300 | IV | 1395 | 1025 | 90 | adjustable | 650 | 198 | 420 | 1600 |
| XZ45T11D | 2200 | 800-2300 | IV | 1395 | 1025 | 90 | fixed | 650 | 198 | 420 | 1590 |

50G Series --- Fixed Frame



| Model Number | Capacity (kg) | Roll Range D-E (mm) | Mounting Class ISO | Long Arm Length /A (mm) | Short Arm Length /B (mm) | Long Arm Thickness /C (mm) | Short Arm Type (mm) | VCG (mm) | ET (mm) | HCG (mm) | Weight (kg) |
|--------------|------------------|------------------------|--------------------------|----------------------------------|-----------------------------------|-------------------------------------|---------------------------|-------------|------------|-------------|----------------|
| XZ50G01D | 5000 | 250-1300 | IV | 900 | 570 | 90 | fixed | 495 | 220 | 290 | 1250 |
| XZ50G02D | 4500 | 250-1520 | IV | 960 | 680 | 90 | fixed | 495 | 220 | 315 | 1350 |
| XZ50G03D | 3900 | 460-1830 | IV | 1115 | 820 | 90 | fixed | 495 | 220 | 343 | 1450 |
| XZ50G04D | 3300 | 580-2130 | IV | 1265 | 945 | 90 | fixed | 495 | 220 | 368 | 1600 |
| XZ50G05D | 5000 | 530-1300 | IV | 900 | 570 | 90 | fixed | 495 | 220 | 290 | 1220 |
| XZ50G06D | 4500 | 530-1520 | IV | 960 | 680 | 90 | fixed | 495 | 220 | 315 | 1320 |
| XZ50G07D | 3900 | 690-1830 | IV | 1115 | 820 | 90 | fixed | 495 | 220 | 343 | 1420 |
| XZ50G08D | 3300 | 890-2130 | IV | 1265 | 945 | 90 | fixed | 495 | 220 | 368 | 1570 |

Contact Plate --- Fixed Frame



| Model Number | Capacity (kg) | Roll Range D-E (mm) | Mounting Class ISO | Short Arm Type | Contact Plate (mm) | ET (mm) | HCG (mm) | Weight (kg) |
|--------------|------------------|------------------------|--------------------------|----------------|-----------------------|------------|-------------|----------------|
| XZ60G01D | 5500 | 350-1300 | IV | adjustable | 1050x255 | 260 | 320 | 1535 |
| XZ60G02D | 5200 | 350-1400 | IV | adjustable | 1050x255 | 260 | 327 | 1610 |
| XZ60G03D | 4850 | 350-1520 | IV | adjustable | 1050x255 | 260 | 335 | 1655 |
| XZ60G04D | 4550 | 350-1830 | IV | adjustable | 1050x255 | 260 | 348 | 1725 |
| XZ60G05D | 5500 | 520-1300 | IV | fixed | 1050x255 | 260 | 320 | 1530 |
| XZ60G06D | 5200 | 520-1400 | IV | fixed | 1050x255 | 260 | 327 | 1580 |
| XZ60G07D | 4850 | 540-1520 | IV | fixed | 1050x255 | 260 | 335 | 1625 |
| XZ60G08D | 4550 | 685-1830 | IV | fixed | 1050x255 | 260 | 348 | 1695 |

- Obtain the actual capacity of the forklift and attachments from the forklift manufacturer.
- Above types are the standard types. Please contact the sales person for any special request.

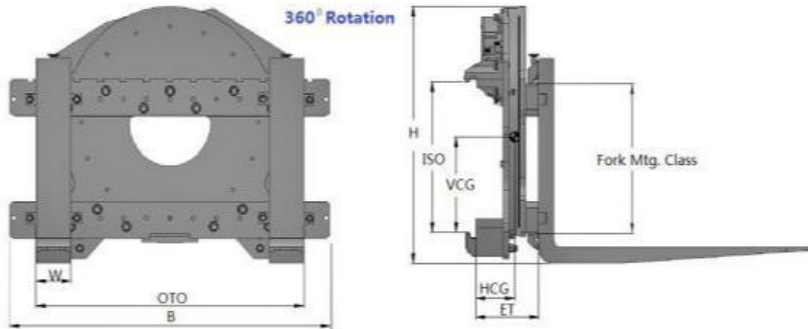


Rotator G Series



G-Series Rotator is designed to give driver the best possible visibility while quickly inverting loads. Widely used in food processing, agriculture, recycling, automotive manufacturing, and general manufacturing operations.

Product Specifications



| Model Number | Capacity @ Load Center (kg@mm) | Rotator Mtg. Class ISO | Fork Mtg. Class ISO | Carriage Width /B (mm) | Fork Max. Spacing OTO (mm) | Min Truck Carriage Width (mm) | Overall Width (mm) | ET (mm) | HCG (mm) | Weight (kg) |
|--------------|-----------------------------------|---------------------------|------------------------|---------------------------|-------------------------------|----------------------------------|-----------------------|------------|-------------|----------------|
| XQ15G01B | 1600@500 | II | II | 815 | 300-705 | 610 | 840 | 127 | 178 | 190 |
| XQ25G01B | 2500@500 | II | II | 1020 | 326-938 | 810 | 1040 | 155 | 133 | 295 |
| XQ35G01C | 3000@500 | III | III | 1100 | 445-925 | 810 | 1100 | 217 | 215 | 480 |
| XQ50G01C | 5000@500 | III | III | 1550 | 490-1440 | 1050 | 1550 | 187 | 95 | 620 |
| XQ50G01D | 5000@500 | IV | III | 1550 | 490-1440 | 1050 | 1550 | 232 | 140 | 638 |
| XQ60G01D | 5400@500 | IV | IV | 1550 | 490-1440 | 1050 | 1550 | 232 | 140 | 638 |

- Obtain the actual capacity of the forklift and attachments from the forklift manufacturer.
- Above types are the standard types. Please contact the sales person for any special request.



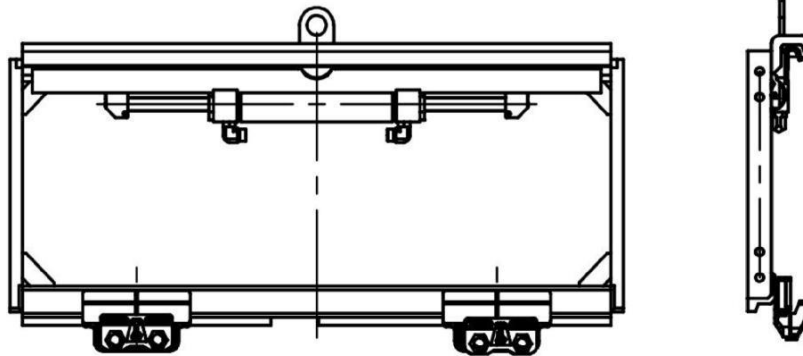


Side Shifter



Sidshifter is the most common attachment installed in forklift, greatly improves the flexibility and moving efficiency of the forklift. It is suitable for various occasions using forklift for moving and stacking.

Product Specifications



| Model Number | Capacity @ Load Center (kg@mm) | Mtg. Class s ISO | Min Truck | | Overall Side shifting (mm) | VCG (mm) | ET (mm) | HCG (mm) | Weight (kg) |
|--------------|-----------------------------------|------------------------|------------------------|------------------------|-------------------------------|-------------|------------|-------------|----------------|
| | | | Carriage Width (mm) | Carriage Width (mm) | | | | | |
| CY25D01B | 2500@600 | II | 895 | 1020 | 200 | 232 | 59 | 27 | 55 |
| CY35D01C | 3500@600 | III | 935 | 1100 | 200 | 300 | 64 | 27 | 72 |
| CY45D01C | 4500@600 | III | 1168 | 1330 | 200 | 392 | 66 | 33 | 161 |
| CY70D01D | 6800@600 | IV | 1526 | 1845 | 300 | 440 | 84 | 43 | 317 |

- Obtain the actual capacity of the forklift and attachments from the forklift manufacturer.
- Above types are the standard types. Please contact the sales person for any special request.



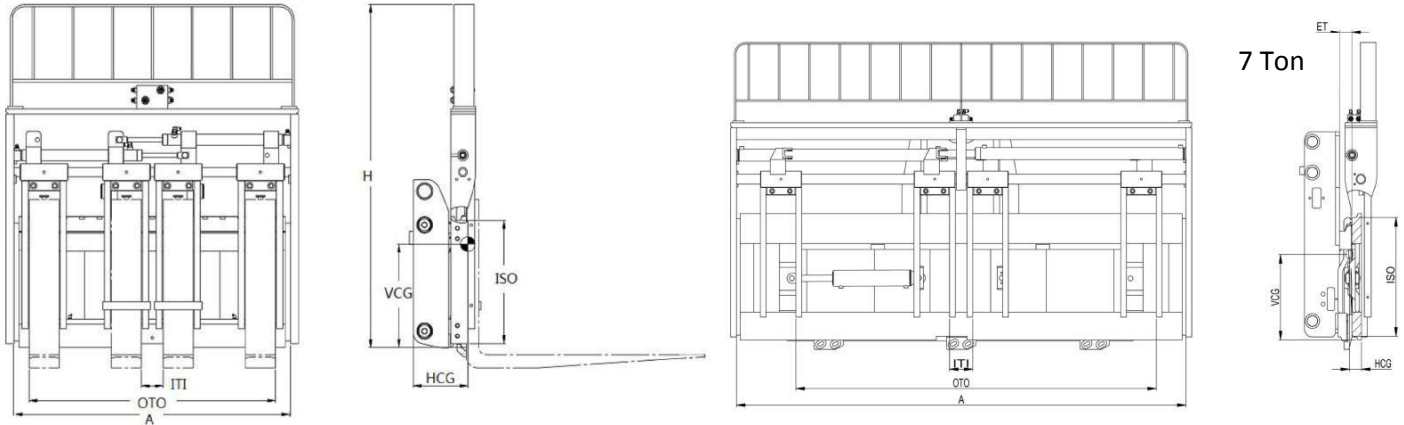


Fork Positioner



Widely used in logistic industry, warehouse and manufacturing industry, etc.
Adjust forks without leaving the seat, save time and reduce product and pallet damage.

Product Specifications



| Model Number | Capacity @ Load Center (kg@mm) | Mtg. Class ISO | Opening Range ITI/OTO (mm) | Carriage Width /A (mm) | Fork Pocket Width (mm) | Overall Side shifting (mm) | VCG (mm) | ET (mm) | HCG (mm) | Weight (kg) |
|--|-----------------------------------|-------------------|----------------------------------|------------------------------|---------------------------|-------------------------------|-------------|------------|-------------|----------------|
| Standard Fork Positioner (D-Series) | | | | | | | | | | |
| CT25D01B | 2500@500 | II | 80-683 | 1020 | 122 | ±100 | 226 | 59 | 60 | 163 |
| CT35D01C | 3500@500 | III | 80-745 | 1100 | 125 | ±100 | 285 | 64 | 52 | 170 |
| CT40D01C | 4000@500 | III | 80-876 | 1300 | 150 | ±100 | 478 | 68 | 45 | 290 |
| CT45D01C | 4500@500 | III | 100-946 | 1370 | 150 | ±100 | 448 | 68 | 46 | 330 |
| CT50D01C | 5000@600 | IV | 100-946 | 1370 | 150 | ±150 | 458 | 68 | 46 | 350 |
| CT70D01D | 6800@600 | IV | 124-1417 | 1845 | 150 | ±150 | 550 | 86 | 160 | 505 |
| CT80D01C | 7500@600 | IV | 124-1377 | 1845 | 170 | ±150 | 565 | 96 | 165 | 600 |

- Obtain the actual capacity of the forklift and attachments from the forklift manufacturer.
- Above types are the standard types. Please contact the sales person for any special request.





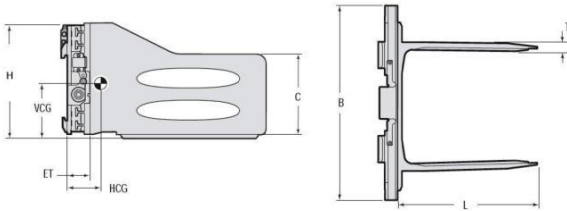
Bale Clamp



Efficiently and economically handle nearly any type of baled products including cotton, wool, synthetic, textile bales, corrugated, newsprint, rag, hay, metal and other scrap bales.

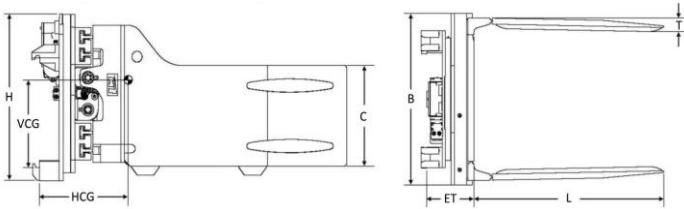
Product Specifications

Sideshifting Bale Clamp



| Model Number | Capacity @ Load Center (kg@mm) | Mtg. Class ISO | Opening Range (mm) | Arm Length /L (mm) | Arm Height /C (mm) | Arm Thickness /T (mm) | Frame Width (mm) | Overall /B Height /H (mm) | VCG (mm) | ET (mm) | HCG (mm) | Weight (kg) |
|--------------|-----------------------------------|-------------------|-----------------------|-----------------------|-----------------------|--------------------------|---------------------|------------------------------|-------------|------------|-------------|----------------|
| JR20D01B | 1900@500 | II | 450-1730 | 991 | 415 | 70 | 1040 | 665 | 220 | 127 | 315 | 422 |
| JR20D01C | 1900@500 | III | 450-1730 | 991 | 415 | 70 | 1040 | 665 | 220 | 127 | 315 | 422 |
| JR20D02B | 1900@500 | II | 450-1730 | 1194 | 415 | 70 | 1040 | 665 | 220 | 127 | 401 | 465 |
| JR20D02C | 1900@500 | III | 450-1730 | 1194 | 415 | 70 | 1040 | 665 | 220 | 127 | 401 | 465 |
| JR30D01C | 2700@500 | III | 550-1900 | 991 | 460 | 75 | 1015 | 730 | 255 | 150 | 312 | 579 |
| JR30D02B | 2700@500 | II | 550-1900 | 1194 | 460 | 75 | 1015 | 730 | 255 | 142 | 396 | 624 |
| JR30D02C | 2700@500 | III | 550-1900 | 1194 | 460 | 75 | 1015 | 730 | 255 | 150 | 391 | 640 |
| JR30D03C | 2700@500 | III | 490-2300 | 1194 | 460 | 75 | 1600 | 730 | 255 | 150 | 240 | 730 |

Revolving Bale Clamp



| Model Number | Capacity @ Load Center (kg@mm) | Mtg. Class ISO | Opening Range (mm) | Arm Length /L (mm) | Arm Height /C (mm) | Arm Thickness /T (mm) | Frame Width (mm) | Overall /B Height /H (mm) | VCG (mm) | ET (mm) | HCG (mm) | Weight (kg) |
|--------------|-----------------------------------|-------------------|-----------------------|-----------------------|-----------------------|--------------------------|---------------------|------------------------------|-------------|------------|-------------|----------------|
| JR20X01B | 1900@500 | II | 450-1730 | 991 | 415 | 70 | 1040 | 775 | 335 | 221 | 300 | 640 |
| JR20X01C | 1900@500 | III | 450-1730 | 991 | 415 | 70 | 1040 | 775 | 335 | 221 | 300 | 640 |
| JR20X02B | 1900@500 | II | 440-1730 | 1194 | 415 | 70 | 1040 | 775 | 335 | 221 | 368 | 683 |
| JR20X02C | 1900@500 | III | 440-1730 | 1194 | 415 | 70 | 1040 | 775 | 335 | 221 | 368 | 683 |
| JR30X01B | 2700@500 | II | 550-1900 | 991 | 460 | 75 | 1015 | 775 | 335 | 236 | 328 | 772 |
| JR30X01C | 2700@500 | III | 550-1900 | 991 | 460 | 75 | 1015 | 775 | 335 | 279 | 366 | 788 |
| JR30X02B | 2700@500 | II | 550-1900 | 1194 | 460 | 75 | 1015 | 775 | 335 | 236 | 396 | 835 |
| JR30X02C | 2700@500 | III | 560-1905 | 1194 | 460 | 75 | 1015 | 775 | 335 | 279 | 432 | 854 |

- Obtain the actual capacity of the forklift and attachments from the forklift manufacturer.
- Above types are the standard types. Please contact the sales person for any special request.





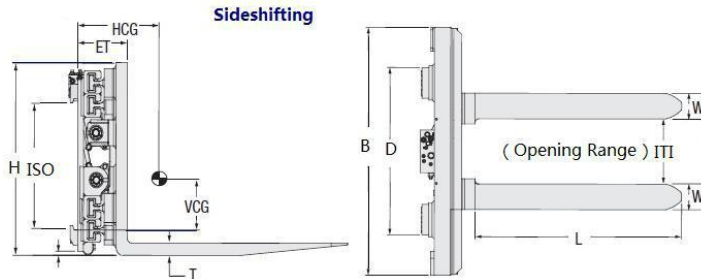
Fork Clamp



Generally used in handling of pallets and clamping of goods, different clamp arms can be installed on the forks to realize special functions.

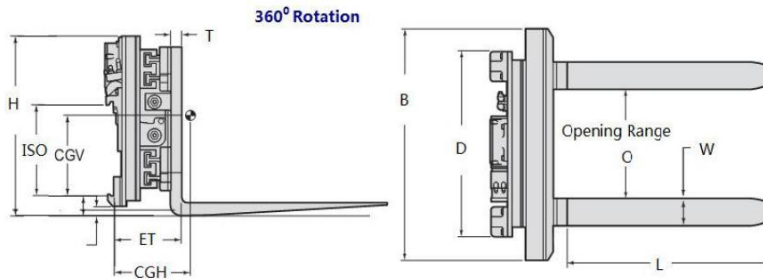
Product Specifications

Sideshifting Fork Clamp



| Model Number | Capacity @ Load Center (kg@mm) | Mtg. Class ISO | Opening Range (mm) | Arm Pad Size (WxTxL) (mm) | Frame Width /B (mm) | Hook Spread /D (mm) | Overall Height /H (mm) | VCG (mm) | ET (mm) | HCG (mm) | Weight (kg) |
|--------------|--------------------------------|----------------|--------------------|---------------------------|---------------------|---------------------|------------------------|----------|---------|----------|-------------|
| JF20D01B | 1600@600 | II | 410-1660 | 125×40×1070 | 940 | 890 | 645 | 175 | 180 | 198 | 306 |
| JF25D01B | 2300@600 | II | 465-1810 | 125×50×1070 | 1015 | 915 | 710 | 195 | 208 | 203 | 420 |
| JF25D01C | 2300@600 | III | 465-1810 | 125×50×1070 | 1015 | 915 | 710 | 200 | 216 | 201 | 438 |

Revolving Fork Clamp



| Model Number | Capacity @ Load Center (kg@mm) | Mtg. Class ISO | Opening Range (mm) | Arm Pad Size (WxTxL) (mm) | Frame Width /B (mm) | Hook Spread /D (mm) | Overall Height /H (mm) | VCG (mm) | ET (mm) | HCG (mm) | Weight (kg) |
|--------------|--------------------------------|----------------|--------------------|---------------------------|---------------------|---------------------|------------------------|----------|---------|----------|-------------|
| JF20X01B | 1600@600 | II | 410-1660 | 125×50×1070 | 940 | 925 | 775 | 275 | 287 | 213 | 579 |
| JF20X02B | 1600@600 | II | 410-1660 | 125×50×1220 | 940 | 925 | 775 | 275 | 287 | 213 | 597 |
| JF30X01B | 2300@600 | II | 440-1785 | 150×50×1070 | 1015 | 925 | 775 | 275 | 305 | 224 | 686 |
| JF30X01C | 2300@600 | III | 440-1785 | 150×50×1070 | 1015 | 925 | 775 | 275 | 345 | 262 | 704 |
| JF30X02B | 2300@600 | II | 440-1785 | 150×50×1220 | 1015 | 925 | 775 | 275 | 305 | 224 | 695 |
| JF30X02C | 2300@600 | III | 440-1785 | 150×50×1220 | 1015 | 925 | 775 | 275 | 345 | 262 | 713 |

- Obtain the actual capacity of the forklift and attachments from the forklift manufacturer.
- Above types are the standard types. Please contact the sales person for any special request.



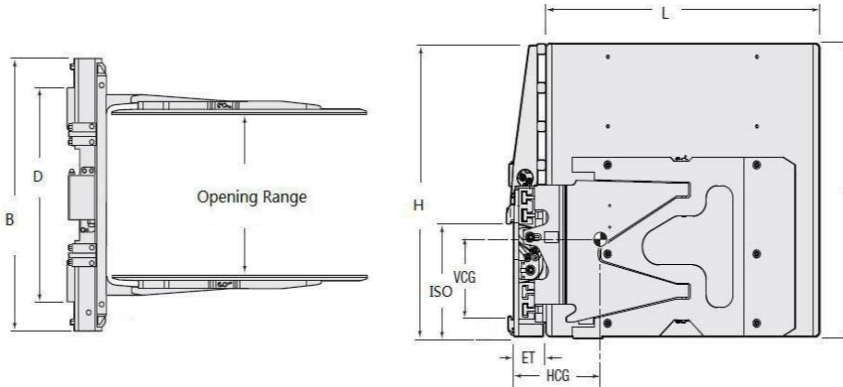


Carton Clamp



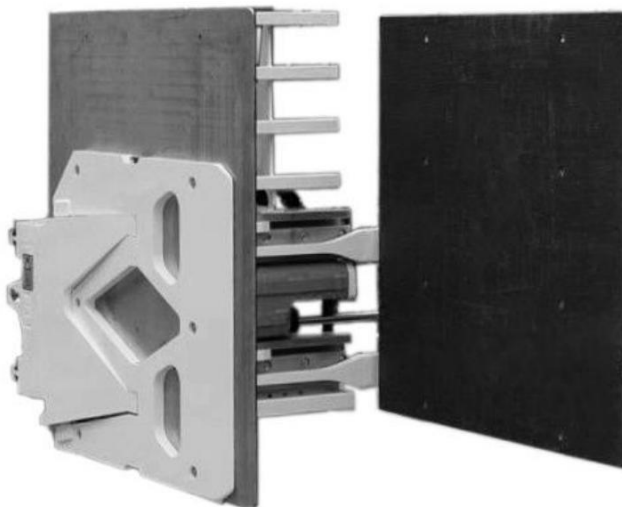
It allows efficient handling various products including consumer paper products, appliances, consumer electronics, wine, packaged foods (canned or boxed), chemicals and plastics.

Product Specifications



| Model Number | Capacity @ Load Center (kg@mm) | Mtg. Class ISO | Opening Range (mm) | Arm Length /L (mm) | Arm Height /A (mm) | Frame Width /B (mm) | Hook Spread /D (mm) | VCG (mm) | ET (mm) | HCG (mm) | Weight (kg) |
|--------------|-----------------------------------|-------------------|-----------------------|-----------------------|-----------------------|------------------------|------------------------|-------------|------------|-------------|----------------|
| JD20D01 | 1600@610 | II | 560-1930 | 1220 | 1200 | 1040 | 825 | 360 | 127 | 476 | 705 |
| JD20D02 | 1400@710 | II | 560-1930 | 1420 | 1200 | 1040 | 825 | 315 | 127 | 483 | 770 |
| JD20D03 | 1450@685 | II | 560-1930 | 1370 | 1525 | 1040 | 825 | 420 | 127 | 545 | 824 |
| JD30D01 | 2300@510 | III | 535-1850 | 1015 | 1525 | 1015 | 940 | 450 | 152 | 485 | 899 |
| JD30D02 | 2300@535 | III | 535-1850 | 1066 | 1525 | 1015 | 940 | 450 | 152 | 485 | 906 |

- Obtain the actual capacity of the forklift and attachments from the forklift manufacturer.
- Above types are the standard types. Please contact the sales person for any special request.



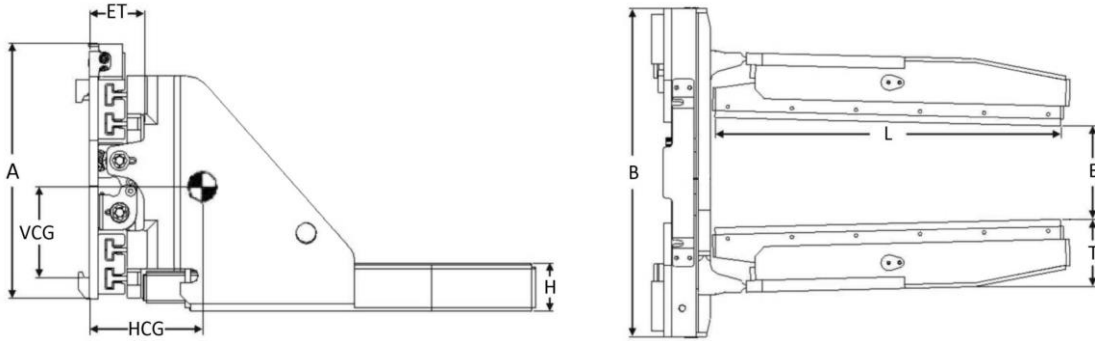


Block Clamp



Widely used in construction material, metallurgy industries for holding concrete blocks, cement bricks carbon cubes under normal temperature.

Product Specifications



| Model Number | Capacity @ Load Center (kg@mm) | Mtg. Class | Opening Range E (mm) | Arm Length /L (mm) | Arm Height /H (mm) | Arm Thickness /T (mm) | Frame Width /B (mm) | Hook Spread (mm) | Overall Height /A (mm) | VCG (mm) | ET (mm) | HCG (mm) | Weight (kg) |
|--------------|--------------------------------|------------|----------------------|--------------------|--------------------|-----------------------|---------------------|------------------|------------------------|----------|---------|----------|-------------|
| JK30D01B | 2700@500 | II | 275-1620 | 1100 | 131 | 225 | 1016 | 825 | 744 | 175 | 149 | 324 | 578 |
| JK30D01C | 2700@500 | III | 275-1620 | 1100 | 131 | 225 | 1016 | 978 | 744 | 179 | 154 | 318 | 600 |
| JK30D02B | 2700@500 | II | 275-1620 | 1400 | 131 | 227 | 1016 | 825 | 744 | 156 | 149 | 427 | 674 |
| JK30D02C | 2700@500 | III | 275-1620 | 1400 | 131 | 227 | 1016 | 978 | 744 | 161 | 154 | 420 | 695 |

- Obtain the actual capacity of the forklift and attachments from the forklift manufacturer.
- Above types are the standard types. Please contact the sales person for any special request.



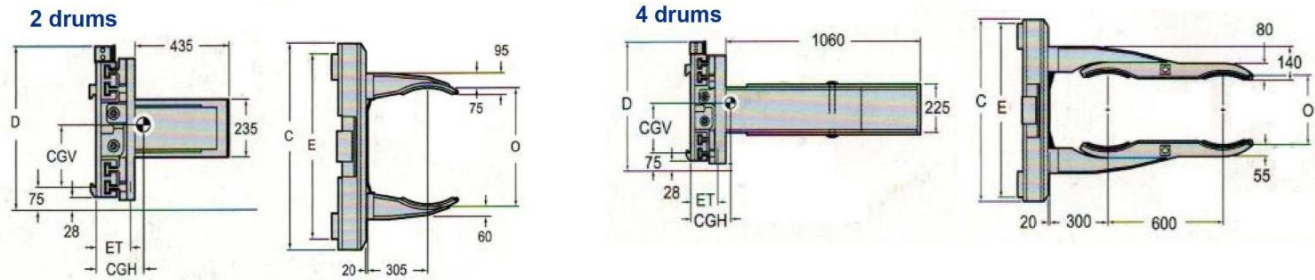


Drum Clamp



Widely used in the petroleum and chemical industry and in other applications that require the handling of standard drums.

Product Specifications



| Catalog Order No. | Capacity@ Load Center (kg@mm) | Mtg. Class ISO | Opening Range /O (mm) | Frame Width /C (mm) | Overall Height /D (mm) | Hook Spread /E (mm) | VCG (mm) | HCG (mm) | ET (mm) | Weight (kg) |
|---------------------------------|-------------------------------|----------------|-----------------------|---------------------|------------------------|---------------------|----------|----------|---------|-------------|
| Sideshifting for 2 drums | | | | | | | | | | |
| JT20D01B | 1400@500 | II | 395-1545 | 940 | 645 | 890 | 210 | 100 | 145 | 285 |
| JT20D02B | 1900@500 | II | 520-1750 | 940 | 620 | 760 | 220 | 104 | 145 | 295 |
| Revolving for 2 drums | | | | | | | | | | |
| JT02X02B | 1900@500 | II | 520-1750 | 940 | 775 | 815 | 410 | 114 | 216 | 522 |
| Sideshifting for 4 drums | | | | | | | | | | |
| JT20D03B | 1400@500 | II | 335-1480 | 940 | 645 | 890 | 220 | 290 | 147 | 385 |
| JT20D04B | 1900@500 | II | 460-1690 | 940 | 645 | 890 | 220 | 295 | 147 | 395 |
| Revolving for 4 drums | | | | | | | | | | |
| JT20X04B | 1900@500 | II | 460-1690 | 940 | 775 | 815 | 335 | 277 | 239 | 613 |

- Obtain the actual capacity of the forklift and attachments from the forklift manufacturer.
- Above types are the standard types. Please contact the sales person for any special request.



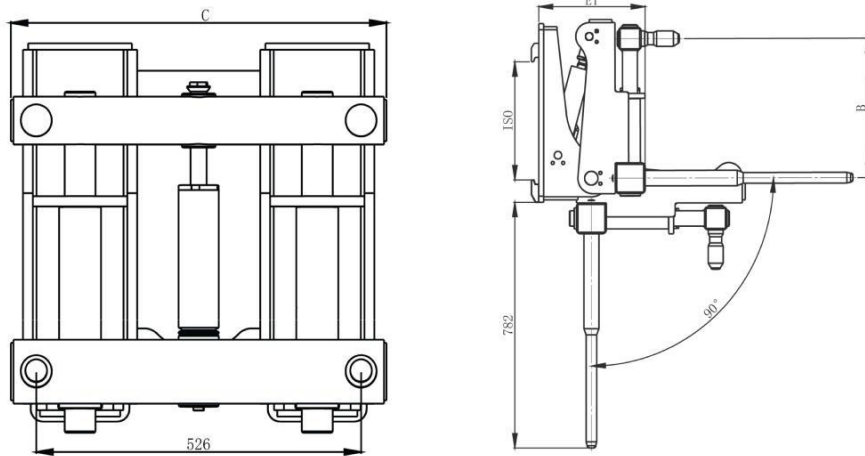


Drum Handler



Widely used in the petroleum and chemical industry and in other applications that require the handling of standard drums.

Product Specifications



| Catalog Order No. | Capacity (kg) | Mts. Class | Opening Range /B (mm) | Frame Width /C (mm) | VCG (mm) | HCG (mm) | ET (mm) | Weight (kg) |
|-------------------|---------------|------------|-----------------------|---------------------|----------|----------|---------|-------------|
| JT02Q01B | 200 | II | 322-452 | 600 | 255 | 218 | 356 | 230 |
| JT04Q01B | 400 | II | 322-452 | 1200 | 245 | 230 | 356 | 310 |
| JT06Q01B | 600 | II | 322-452 | 1800 | 240 | 242 | 356 | 410 |

- Obtain the actual capacity of the forklift and attachments from the forklift manufacturer.
- Above types are the standard types. Please contact the sales person for any special request.



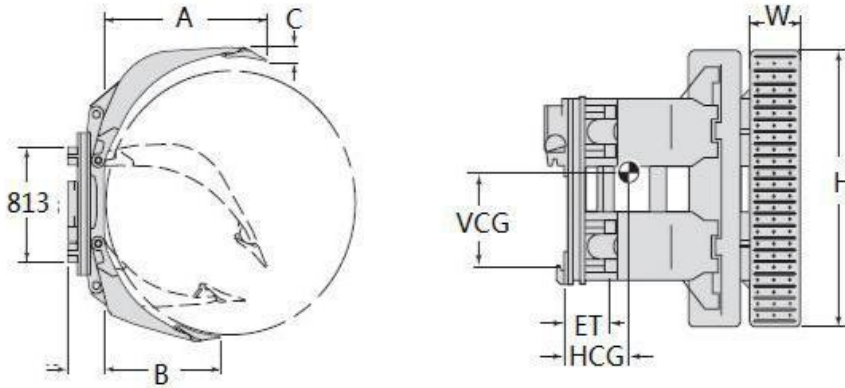


Tyre Clamp



Widely used in all kind of tyre handling and stacking. Due to non-pallet handling and stacking, enlarges a great storage area. Efficient handling and stacking.

Product Specifications



| Catalog | Capacity@ Load Center (kg@mm) | Roll Range mm | Mtg. Class ISO | Long Arm Length /A mm | Short Arm Length /B mm | Long Arm Thickness /C mm | Short Arm Thickness /D mm | Frame Width WxH mm | ET mm | VCG mm | HCG mm | Weight (kg) |
|----------|-------------------------------------|------------------|----------------------|--------------------------------|---------------------------------|-----------------------------------|------------------------------------|--------------------------|----------|-----------|-----------|----------------|
| XL15G01B | 1200 | 410-1300 | II | 790 | 580 | 60 | 30 | 250x1500 | 135 | 330 | 216 | 400 |
| XL25G01C | 1950 | 470-1600 | III | 1050 | 870 | 36 | 30 | 300x1500 | 228 | 362 | 329 | 696 |
| XL30G01C | 2450 | 625-1600 | III | 1098 | 739 | 43 | 30 | 300x2000 | 195 | 429 | 287 | 850 |

- Obtain the actual capacity of the forklift and attachments from the forklift manufacturer.
- Above types are the standard types. Please contact the sales person for any special request.



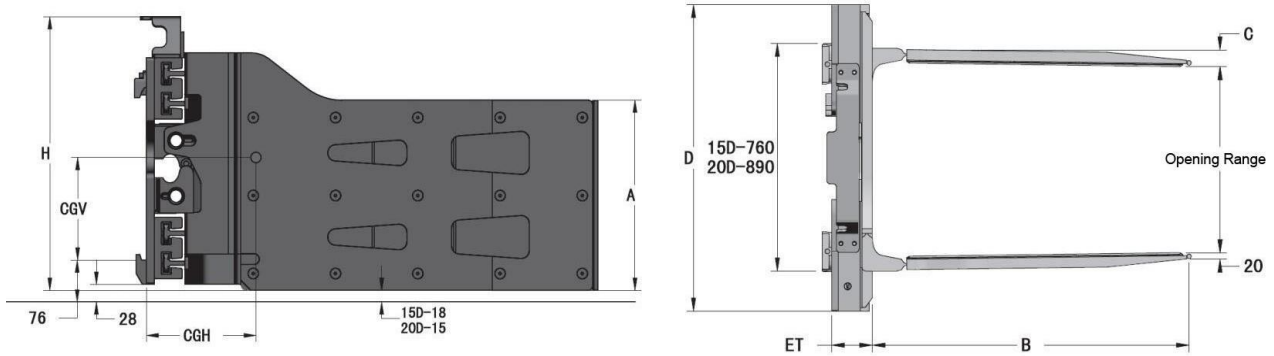


Multi-purpose Clamp



Efficiently and economically handle nearly any types of paper carton, wooden carton, metal carton and baled products, widely used in workshop and port without pallet.

Product Specifications



| Model Number | Capacity @ Load Center (kg@mm) | Mtg. Class ISO | Opening Range (mm) | Arm Length /B (mm) | Arm Height /A (mm) | Frame Width /D (mm) | Overall Height /H (mm) | Weight (kg) |
|----------------------|--------------------------------|----------------|--------------------|--------------------|--------------------|---------------------|------------------------|-------------|
| Side Shifting | | | | | | | | |
| MCR15D01B | 1400@500 | II | 420-1570 | 955 | 455 | 865 | 665 | 465 |
| MCR15D02B | 1400@500 | II | 520-1720 | 1220 | 415 | 865 | 665 | 485 |
| MCR20D01B | 1900@500 | II | 550-1800 | 1000 | 610 | 940 | 665 | 505 |
| MCR20D02B | 1900@500 | II | 560-1760 | 955 | 455 | 940 | 665 | 475 |
| MCR20D03B | 1900@500 | II | 520-1720 | 1220 | 415 | 940 | 665 | 495 |
| MCR30D01C | 2700@500 | III | 560-1940 | 1000 | 610 | 1015 | 730 | 603 |
| MCR30D02C | 2700@500 | III | 595-1940 | 1160 | 455 | 1015 | 730 | 604 |

- Obtain the actual capacity of the forklift and attachments from the forklift manufacturer.
- Above types are the standard types. Please contact the sales person for any special request.



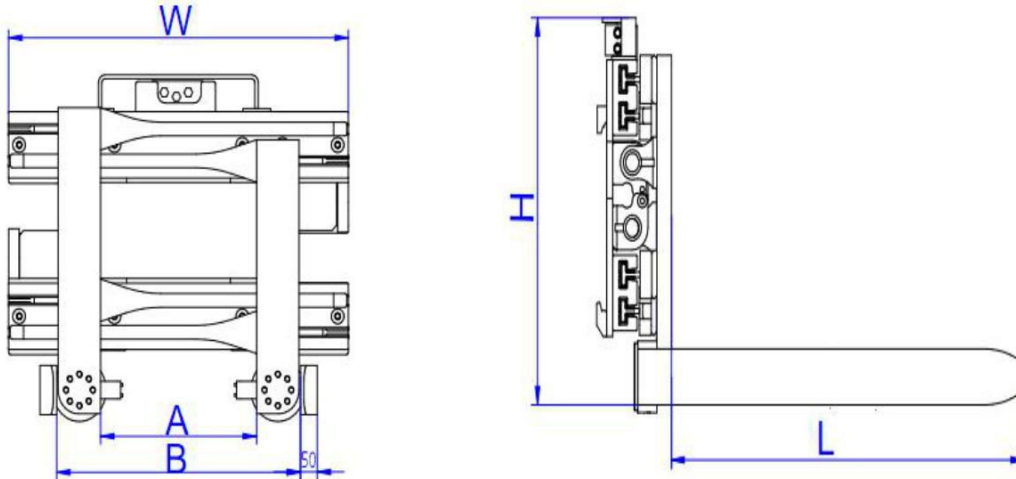


Turnaforks



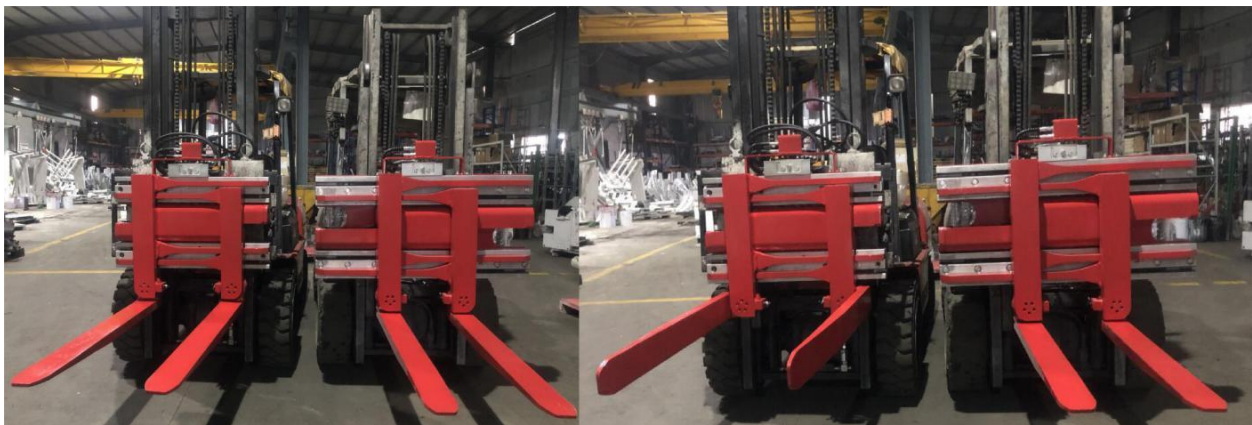
Widely used in a variety of manufacturing, receiving, warehousing and shipping environments that require both clamp handling and pallet handling.

Product Specifications



| Model Number | Capacity @ Load Center (kg@mm) | Mtg. Class ISO | Fork Opening Range (A) (mm) | Arm Opening Range (B) (mm) | Fork Length (L) (mm) | Frame Width (W) (mm) | Overall Height (H) (mm) | Weight (kg) |
|--------------|--------------------------------|----------------|-----------------------------|----------------------------|----------------------|----------------------|-------------------------|-------------|
| JFM15D01B | 1100@600 | II | 435-1555 | 715-1835 | 915 | 865 | 620 | 265 |
| JFM15D02B | 1100@600 | II | 435-1555 | 715-1835 | 1065 | 865 | 620 | 275 |
| JFM15D03B | 1100@600 | II | 435-1555 | 715-1835 | 1220 | 865 | 620 | 288 |
| JFM20D01B | 1600@600 | II | 410-1660 | 690-1940 | 915 | 940 | 620 | 303 |
| JFM20D02B | 1600@600 | II | 410-1660 | 690-1940 | 1065 | 940 | 620 | 316 |
| JFM20D03B | 1600@600 | II | 410-1660 | 690-1940 | 1220 | 940 | 620 | 337 |
| JFM30D01C | 2600@500 | III | 320-1790 | 600-2070 | 1200 | 1300 | 870 | 585 |
| JFM30D02C | 2300@600 | III | 465-1810 | 745-2090 | 915 | 1015 | 915 | 416 |
| JFM30D03C | 2300@600 | III | 465-1810 | 745-2090 | 1065 | 1015 | 915 | 458 |
| JFM30D04C | 2300@600 | III | 465-1810 | 745-2090 | 1220 | 1015 | 915 | 475 |

- Obtain the actual capacity of the forklift and attachments from the forklift manufacturer.
- Above types are the standard types. Please contact the sales person for any special request.



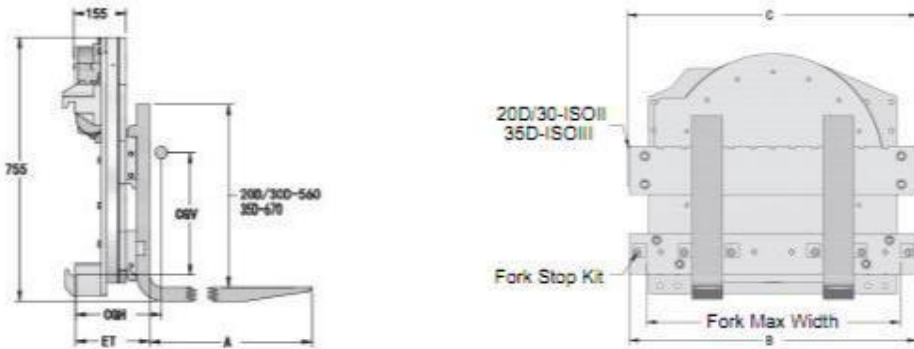


Rotator D-series



Widely used in food processing, agriculture, recycling, automotive manufacturing, and general manufacturing operations.

Product Specifications



| Model Number | Capacity @ Load Center (kg@mm) | Rotator Mtg. Class | Fork Mtg. Class | Carriage Width (mm) | Fork Max. Spacing OTO /B (mm) | Min Truck Carriage Width (mm) | Overall Width (mm) | ET (mm) | HCG (mm) | Weight (kg) |
|--------------|--------------------------------|--------------------|-----------------|---------------------|-------------------------------|-------------------------------|--------------------|---------|----------|-------------|
| XQ15D01B | 1600@500 | II | II | 815 | 300-705 | 610 | 840 | 127 | 178 | 190 |
| XQ25D01B | 2500@500 | II | II | 1020 | 326-938 | 810 | 1040 | 155 | 133 | 295 |
| XQ35D01C | 3000@500 | III | III | 1100 | 445-925 | 810 | 1100 | 217 | 215 | 480 |
| XQ50D01C | 5000@500 | III | III | 1550 | 490-1440 | 1050 | 1550 | 187 | 95 | 620 |
| XQ50D01D | 5000@500 | IV | III | 1550 | 490-1440 | 1050 | 1550 | 232 | 140 | 638 |
| XQ60D01D | 5400@500 | IV | IV | 1550 | 490-1440 | 1050 | 1550 | 232 | 140 | 638 |

- Obtain the actual capacity of the forklift and attachments from the forklift manufacturer.
- Above types are the standard types. Please contact the sales person for any special request.



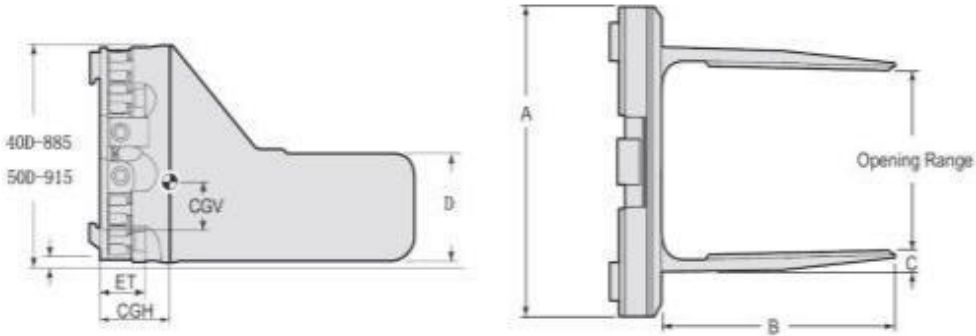


Pulpbale Clamp



Efficiently and economically handle all kind of pule bales and unitized pulp in stevedoring, mill, warehousing,shipboard and transporting operations.

Product Specifications



| Model Number | Capacity @ Load Center (kg@mm) | Mtg. Class | Opening Range (mm) | Arm Length (mm) | Arm Height (mm) | Arm Thickness (mm) | Frame Width (mm) | ET (mm) | HCG (mm) | Weight (kg) |
|--------------|--------------------------------|------------|--------------------|-----------------|-----------------|--------------------|------------------|---------|----------|-------------|
| PBC40D01C | 4000@600 | IV | 490-2115 | 1200 | 460 | 85 | 1370 | 178 | 390 | 1000 |
| PBC40D02C | 4000@600 | IV | 490-2115 | 1400 | 460 | 90 | 1370 | 178 | 395 | 1060 |
| PBC40D03C | 4000@600 | IV | 545-2550 | 1200 | 460 | 85 | 1690 | 178 | 390 | 1120 |
| PBC40D04C | 4000@600 | IV | 545-2550 | 1400 | 460 | 90 | 1690 | 178 | 395 | 1180 |
| PBC50D01C | 5000@600 | IV | 650-2370 | 1200 | 460 | 85 | 1475 | 190 | 242 | 1205 |
| PBC50D02C | 5000@600 | IV | 650-2370 | 1400 | 460 | 90 | 1475 | 190 | 242 | 1285 |
| PBC50D03C | 5000@600 | IV | 520-2240 | 1200 | 460 | 85 | 1575 | 190 | 242 | 1315 |
| PBC50D04C | 5000@600 | IV | 520-2240 | 1400 | 460 | 90 | 1575 | 190 | 242 | 1395 |

- Obtain the actual capacity of the forklift and attachments from the forklift manufacturer.
- Above types are the standard types. Please contact the sales person for any special request.



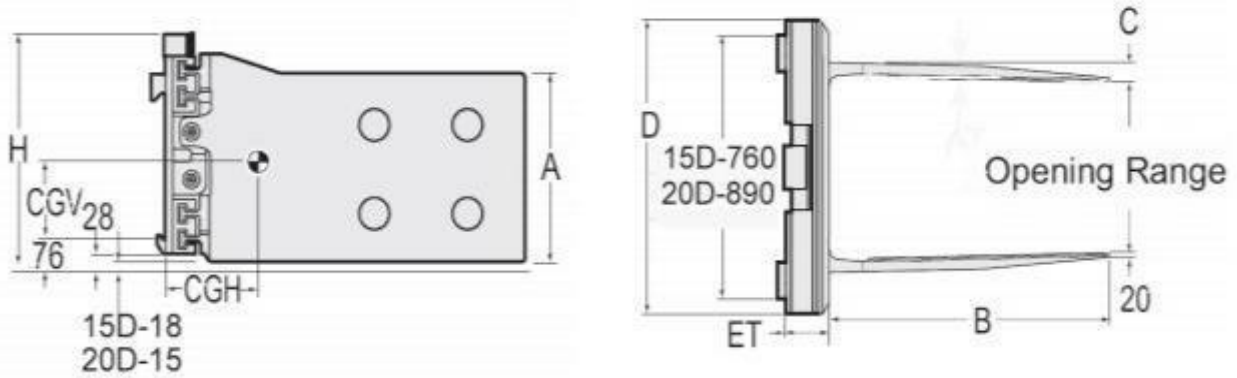


Tobacco Clamp



Efficiently and economically handle nearly any types of paper carton, wooden carton, metal carton and other scrap bales.

Product Specifications



| Model Number | Capacity @ Load Center (kg@mm) | Mtg. Class ISO | Opening Range (mm) | Arm Length /B (mm) | Arm Height /A (mm) | Frame Width /D (mm) | Overall Height /H (mm) | Weight (kg) |
|--------------|--------------------------------|----------------|--------------------|--------------------|--------------------|---------------------|------------------------|-------------|
| YYJ15D01B | 1400@500 | II | 460-1600 | 1130 | 580 | 940 | 665 | 450 |
| YYJ15D02B | 1400@500 | II | 460-1600 | 1130 | 580 | 940 | 665 | 430 |
| YYJ20D01B | 1900@500 | II | 480-1760 | 1130 | 580 | 1020 | 665 | 480 |
| YYJ20D02B | 1900@500 | II | 480-1760 | 1330 | 580 | 1020 | 665 | 500 |
| YYJ30D01C | 2200@500 | II | 650-2460 | 1150 | 580 | 1600 | 740 | 675 |
| YYJ30D02C | 2200@500 | III | 650-2460 | 1150 | 580 | 1600 | 740 | 680 |
| YYJ35D01C | 2500@500 | III | 600-1945 | 1350 | 650 | 1015 | 740 | 720 |

- Obtain the actual capacity of the forklift and attachments from the forklift manufacturer.
- Above types are the standard types. Please contact the sales person for any special request.



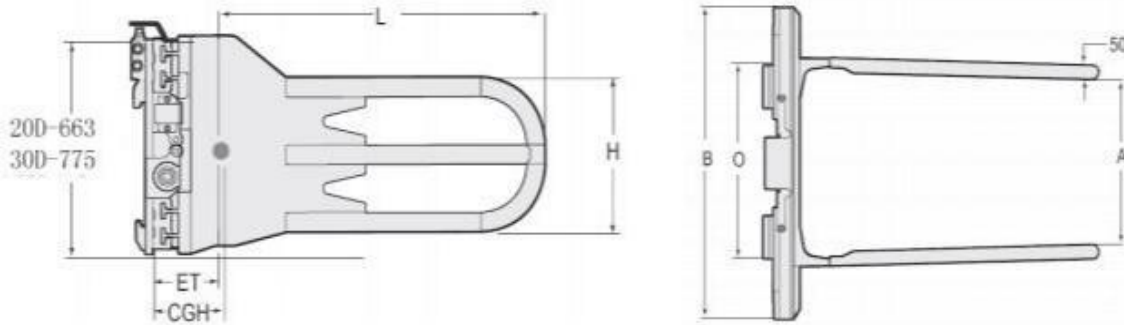


Foam Clamp



Efficiently and safely handle and stack any type of cotton products including rubber, chemical industry and chemical fiber, etc.

Product Specifications



| Model Number | Capacity @ Load Center (kg@mm) | Mtg. Class ISO | Opening Range (mm) | Arm Length (mm) | Arm Height (mm) | Arm Thickness (mm) | Frame Width (mm) | ET (mm) | HCG (mm) | Weight (kg) |
|--------------|--------------------------------|----------------|--------------------|-----------------|-----------------|--------------------|------------------|---------|----------|-------------|
| FRC15D01B | 500@500 | II | 1260-2630 | 980 | 417 | 47 | 1041 | 127 | 310 | 465 |
| FRC15D02B | 600@500 | II | 850-2230 | 980 | 417 | 47 | 1041 | 127 | 280 | 430 |
| FRC15D03B | 500@1000 | II | 900-2300 | 1800 | 400 | 50 | 1041 | 167 | 280 | 475 |
| FRC15D04B | 200@1000 | II | 1750-3150 | 1800 | 400 | 50 | 1900 | 167 | 280 | 650 |
| FRC15D05B | 500@1000 | II | 1000-2400 | 1800 | 400 | 50 | 1041 | 167 | 280 | 490 |
| FRC20D01B | 1000@500 | II | 900-2300 | 1500 | 600 | 50 | 1041 | 167 | 280 | 475 |
| FRC30D01C | 2200@500 | III | 790-2600 | 2500 | 600 | 60 | 1600 | 200 | 280 | 800 |
| FRC30D02C | 2200@500 | III | 790-2600 | 1800 | 400 | 60 | 1600 | 200 | 300 | 680 |

- Obtain the actual capacity of the forklift and attachments from the forklift manufacturer.
- Above types are the standard types. Please contact the sales person for any special request.



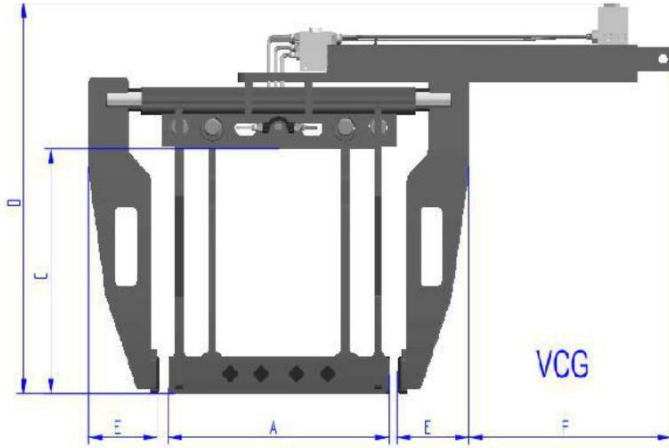


Layer Picker



Stationary fork mount layer picker provides an efficient and cost-effective handle mixed pallet orders.

Product Specifications



| Model Number | Capacity @ Load Center (kg@mm) | Load Dimension A*B (mm) | Range Dimension A (mm) | Range Dimension B (mm) | Load Height C (mm) | Overall Clamp Height D (mm) | Arm Width E (mm) | Extension F (mm) |
|-----------------------------------|--------------------------------|-------------------------|------------------------|------------------------|--------------------|-----------------------------|------------------|------------------|
| Stationary Fork Mount Type | | | | | | | | |
| LPF50A | 500@860 | 1000*800 | 820-1270 | 1020-1520 | 600 | 890 | 200 | 350 |
| LPF70A | 680@600 | 1015*1220 | 965-1115 | 1170-1320 | 890 | 1460 | 125 | 165 |

- Obtain the actual capacity of the forklift and attachments from the forklift manufacturer.
- Above types are the standard types. Please contact the sales person for any special request.

